



Die Components
Normalien
Componenti

Mercedes-Benz

OMCR[®]
STANDARD DIE COMPONENTS



APPROVED BY MERCEDES-BENZ - FREIGEgeben VON MERCEDES-BENZ - APPROVATO DA MERCEDES-BENZ

B8 01 10 100 008 805	B8 0162 410 008 801	B8 0301 231 108 801	B8 0460 231 009 003	B8 0460 850 000 101
				
Washer Scheibe Rondella 405	Bracket for lifting pin Bügel für Tragbolzen Staffa per perno di sollevamento 405	Bush for lifting pin Buchse für Tragbolzen Boccola per perno di sollevamento 406	Wear plate Gleitplatte Piastra guida 407	Locating block Fangbacke Tassello di centraggio 408
B8 0541 000 009 001	B8 0541 000 009 005	B8 0602 321 008 801	B8 1013 110 008 802	B8 1240 300 009 001
				
Gage Einweiser Riferimento 408	Gage Einweiser Riferimento 409	Locating pin Zentrierbolzen Perno di centraggio 409	Collar screw Schulter Passschraube Vite con colletto 410	Lifting bracket VDI 3366 Tragzapfen VDI 3366 Staffa di sollevamento VDI 3366 411
B8 2002 231 009 001	B8 2002 621 008 802	B8 7007 000 008 808	B8 7007 000 008 809	B8 7007 000 008 810
				
Lifting Pin Tragbolzen mit Fallringsicherung Perno di sollevamento 412	Pad retainer pin Steckbolzen Perno di arresto 413	Coil guide roller Führungsrolle Guida nastro 413	Coil guide roller Führungsrolle Guida nastro 414	Coil guide roller Führungsrolle Guida nastro 414

SIMILAR TO MERCEDES-BENZ - ÄHNLICH MERCEDES-BENZ - SIMILE A MERCEDES-BENZ

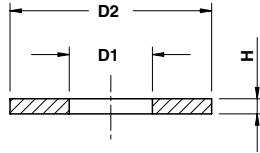
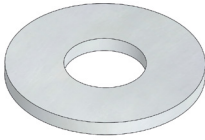
A30	A31	A32	A33	A34
Elastomer Washer Daempfungsscheibe Rondella in elastomero	Washer Scheibe Rondella	Key Passfeder Chivavetta	Guide post Führungssäule Colonna guida	Guide Post Führungssäule Colonna Guida
415	415	416	417	418
A35	A36	A37	A38	A39
Guide Post Führungssäule Colonna Guida	Guide Post Führungssäule Colonna Guida	Wear plate Gleitplatte Piastra guida	Wear plate Gleitplatte Piastra guida	Wear plate Gleitplatte Piastra guida
419	420	421	422	423
A40	A41	A42	A43	A44
"V" driver Prismenführung Guida a "V"	"V" driver Prismenführung Guida a "V"	Cam dwell Überlaufkeile Cuneo	Cam dwell Überlaufkeile Cuneo	Locating block Fangbacke Tassello di centraggio
424	424	425	426	427
A45	A46	A47	A48	A49
Gage for sensor Einweiser für Teillagekontrolle Riferimento per sensore	Gage Einweiser Riferimento	Spacer Distanzscheibe Distanziale	Backing plate Distanzkappe Reazione per cilindro	Stop Block Abstandsblock Distanziale
427	428	428	429	429

Standard
Mercedes-Benz

SIMILAR TO MERCEDES-BENZ - ÄHNLICH MERCEDES-BENZ - SIMILE A MERCEDES-BENZ

A50	A51	A52	A53	A54
				
Locating pin Zentrierbolzen Centraggio	Spring pin Aufnahmebolzen Perno per molla	Locating cone Zentrierzapfen Cono di centraggio	Locating Cone Kegelaufsatz Cono Di Centraggio	Spacer Abstimmsschraube Distanziale
430	430	431	431	432
A55	A56	A57	A58	A59
				
Post ring Sprengring Anello per colonna	Elastomer spring Elastomerfeder Molla in elastomero	Retainer bolt Haltebolzen Tirante	Air pin Druckbolzen Candela	Cam roller Rollenbock Supporto con rullo
432	433	433	434	434
E46.10	E47.10			
				
Bush self-lubricating DIN 9834 Führungsbuchse DIN 9834 Boccola autolubrificante DIN 9834	Toe clamp Haltestück Ritegno			
435	435			

WASHER - SCHEIBE - RONDELLA



Notes

Material: CK45

Only for replacement
Nur für Reparatur
Solo per riparazione

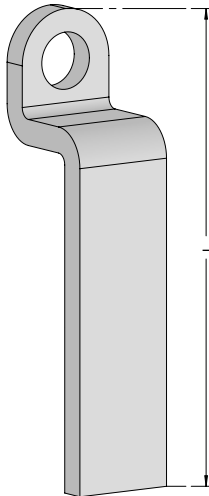
STOCK

ORDER EXAMPLE	MERCEDES-BENZ CODE
	B8 0110 0332957

MERCEDES-BENZ CODE	D1	D2	H	MERCEDES-BENZ CODE	D1	D2	H	MERCEDES-BENZ CODE	D1	D2	H
B8 0110 0332956	14	40	6	B8 0110 0332962	17	80	6	B8 0110 0587878	33	60	6
B8 0110 0332957	14	50	6	B8 0110 0332963	17	80	12	B8 0110 0332945	33	80	6
B8 0110 0332958	14	50	8	B8 0110 0332964	21	50	6	B8 0110 0332946	33	100	8
B8 0110 0332959	17	36	4	B8 0110 0332965	21	100	8	B8 0110 0377008	39	100	8
B8 0110 0332960	17	60	6	B8 0110 0332966	21	100	14	B8 0110 0377011	39	110	8
B8 0110 0332961	17	60	10	B8 0110 0332967	21	120	10				

Standard Mercedes-Benz

BRACKET FOR LIFTING PIN - BÜGEL FÜR TRAGBOLZEN - STAFFA PER PERNO DI SOLLEVAMENTO



STOCK

Notes

Material: S137

Only for replacement
Nur für Reparatur
Solo per riparazione

Application example

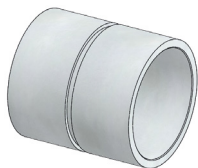
B8 0162 410 008 801

B8 2002 231 009 001

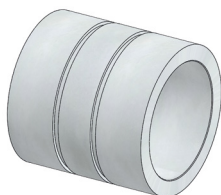
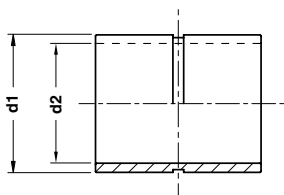
ORDER EXAMPLE	MERCEDES-BENZ CODE
	B8 0162 0530492

MERCEDES-BENZ CODE	L
B8 0162 0530492	100
B8 0162 1045384	82
B8 0162 1104475	90

BUSH FOR LIFTING PIN - BUCHSE FÜR TRAGBOLZEN - BOCCOLA PER PERNO DI SOLLEVAMENTO



FORM A




FORM B

Notes

Material: Si35

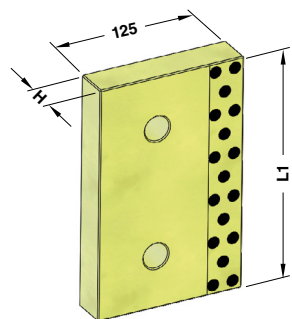
STOCK

	MERCEDES-BENZ CODE		
	B8 0301 0274833		
MERCEDES-BENZ CODE	d1	d2	FORM
B8 0301 0274828	44	34	A
B8 0301 0274833	52	42	A
B8 0301 0274835	62	52	A
B8 0301 0274836	75	65	A
B8 0301 0274838	100	78	B
B8 0301 0274842	105	78	B

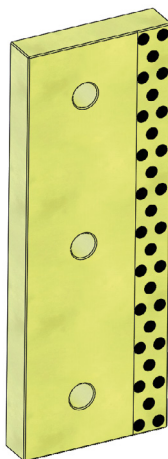
**WEAR PLATE SELF-LUBRICATING
GLEITPLATTE BRONZE MIT FESTSCHMIERSTOFF
PIASTRA GUIDA AUTOLUBRIFICANTE**

Notes

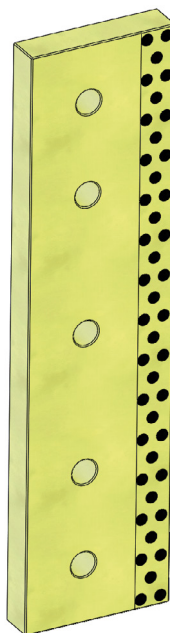
Material: Bronze + Graphite
HB > 190



FORM A



FORM B



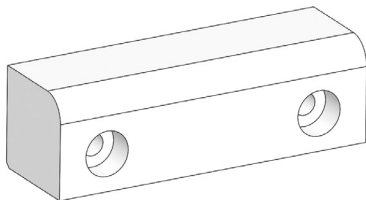
FORM C

ORDER EXAMPLE 	MERCEDES-BENZ CODE
	B8 0460 0528244

MERCEDES-BENZ CODE	H	L1	FORM	MERCEDES-BENZ CODE	H	L1	FORM	MERCEDES-BENZ CODE	H	L1	FORM
B8 0460 0528243	25	160	A	B8 0460 0528246	25	400	C	B8 0460 0528249	30	250	B
B8 0460 0528244	25	200	A	B8 0460 0528247	30	160	A	B8 0460 0528250	30	400	C
B8 0460 0528245	25	250	B	B8 0460 0528248	30	200	B				

Standard
Mercedes-Benz

LOCATING BLOCK - FANGBACKE - TASSELLO DI CENTRAGGIO

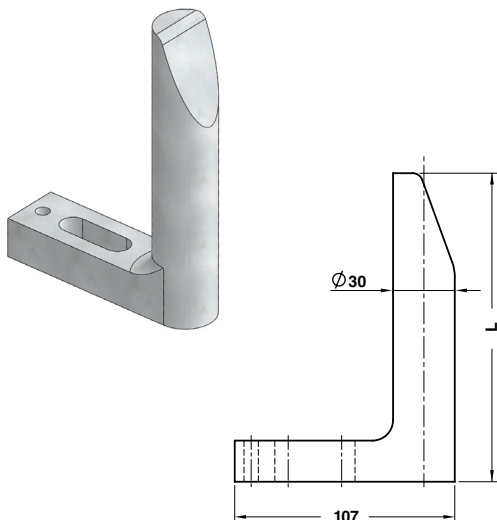


Notes
Material: Polyamide PA6

STOCK

	MERCEDES-BENZ CODE
	B8 0460 0331968
MERCEDES-BENZ CODE	
B8 0460 0331968	

GAGE - EINWEISER - RIFERIMENTO

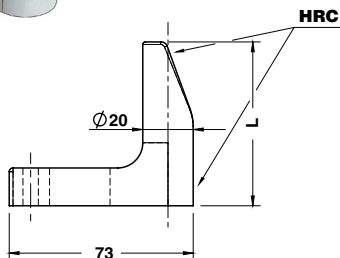
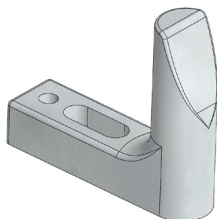


Notes
Material: CK60

STOCK

	MERCEDES-BENZ CODE
	B8 0541 0332635
MERCEDES-BENZ CODE	L
B8 0541 0332634	65
B8 0541 0332635	90
B8 0541 0332636	120
B8 0541 0332637	150
B8 0541 0332638	180
B8 0541 0332641	250

GAGE HARDENED - EINWEISER GEHÄRTET - RIFERIMENTO INDURITO



Notes

Material: CK60 - **HRC:** 58÷60



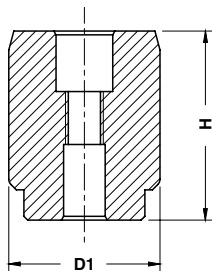
MERCEDES-BENZ CODE

B8 0541 0093840

MERCEDES-BENZ CODE	L
B8 0541 0093839	65
B8 0541 0093840	90

Standard
Mercedes-Benz

LOCATING PIN - ZENTRIERBOLZEN - PERNO DI CENTRAGGIO



Notes

Material: 16MnCr5 - **HRC:** 60÷62



MERCEDES-BENZ CODE

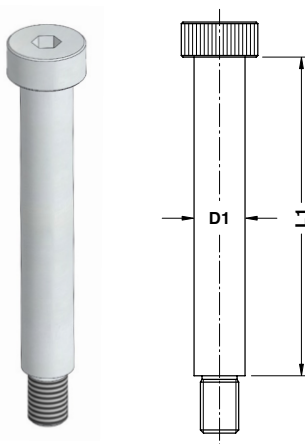
B8 0602 0333315

MERCEDES-BENZ CODE	D1	H
B8 0602 1061335	11	70
B8 0602 0333314	22	50
B8 0602 0333315	25	50
B8 0602 0333316	32	50
B8 0602 1061342	15	70
B8 0602 0333317	40	50
B8 0602 0333318	50	50

COLLAR SCREW - SCHULTER PASSSCHRAUBE - VITE CON COLLETO

Notes
DIN 898 cl. 12.9

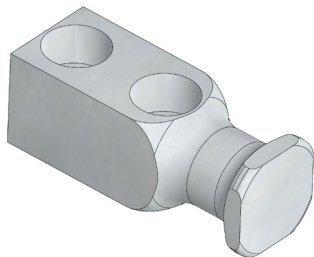
STOCK



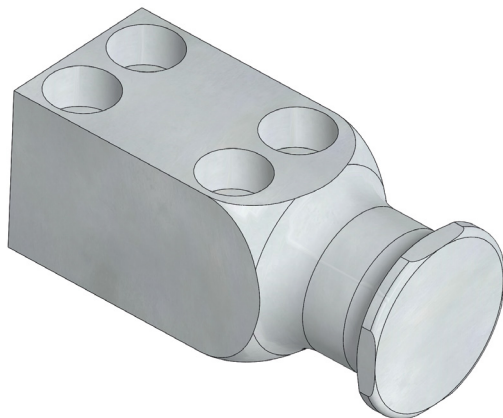
	MERCEDES-BENZ CODE
	B8 1013 0789539

MERCEDES-BENZ CODE	D1	L1	MERCEDES-BENZ CODE	D1	L1	MERCEDES-BENZ CODE	D1	L1
B8 1013 0528837	16	70	B8 1013 0528845	20	60	B8 1013 0789540	16	35
B8 1013 0528838	16	80	B8 1013 0528846	20	70	B8 1013 0789542	16	40
B8 1013 0528839	16	90	B8 1013 0528847	20	80	B8 1013 0789543	16	45
B8 1013 0528840	16	100	B8 1013 0528848	20	90	B8 1013 1018326	8	16
B8 1013 0528841	16	120	B8 1013 0528849	20	100	B8 1013 1043713	8	50
B8 1013 0528842	16	60	B8 1013 0528850	20	120	B8 1013 1060773	12	30
B8 1013 0528843	16	50	B8 1013 0571679	16	30			
B8 1013 0528844	20	50	B8 1013 0789539	16	25			

LIFTING BRACKET VDI 3366 - TRAGZAPFEN VDI 3366 - STAFFA DI SOLLEVAMENTO VDI 3366



FORM A




FORM B

Notes

Material: CK45 - 700÷800 N/mm²
Screws not included





Respect the max load
Maximale Nutzlast beachten
Rispettare il carico Max

WARNING - ACHTUNG - ATTENZIONE:
For safety reason, please consider always that the weight of the die has to be supported by just 2 lifting brackets.

Aus Sicherheitsgründen stets berücksichtigen, dass zwei Tragzapfens das gesamte Werkzeuggewicht tragen müssen.

Per ragioni di sicurezza, considerare sempre che il peso dello stampo deve essere sopportato da 2 sole staffe.

Standard
Mercedes-Benz

	MERCEDES-BENZ CODE
	B8 1240 0333079

MERCEDES-BENZ CODE	Max load (kg)	Max die weight (kg)	FORM	MERCEDES-BENZ CODE	Max load (kg)	Max die weight (kg)	FORM
B8 1240 0333078	320	640	A	B8 1240 0333083	5000	10000	A
B8 1240 0333079	630	1260	A	B8 1240 0333084	8000	16000	B
B8 1240 0333080	1250	2500	A	B8 1240 0333085	12500	25000	B
B8 1240 0333081	2000	4000	A	B8 1240 0333086	20000	40000	B
B8 1240 0333082	3200	6400	A				

LIFTING PIN - TRAGBOLZEN MIT FALLRINGSICHERUNG - PERNO DI SOLLEVAMENTO

Notes

Material: 42CrMo4 + QT



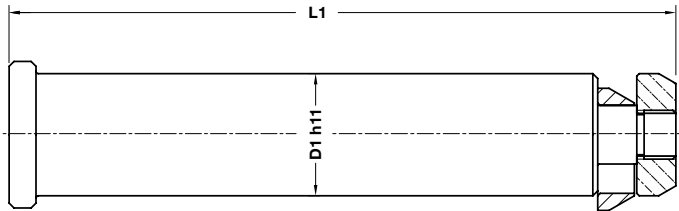
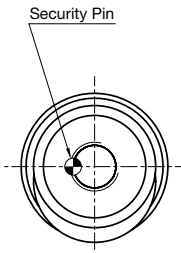
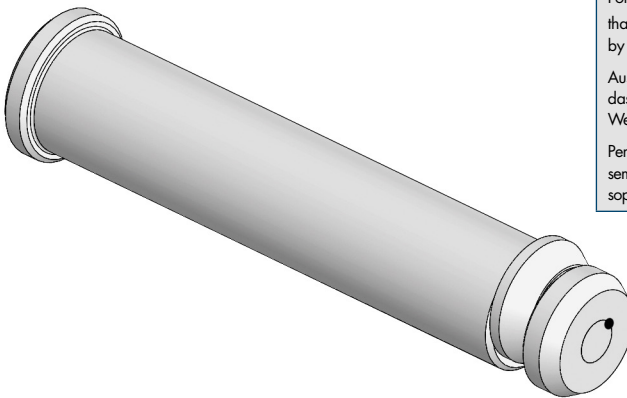
Respect the max load
 Maximale Nutzlast beachten
 Rispettare il carico Max

WARNING - ACHTUNG - ATTENZIONE:

For safety reason, please consider always that the weight of the die has to be supported by just 2 lifting pins.

Aus Sicherheitsgründen stets berücksichtigen, dass zwei Tragbolzen das gesamte Werkzeuggewicht tragen müssen.

Per ragioni di sicurezza, considerare sempre che il peso dello stampo deve essere sopportato da 2 soli perni.

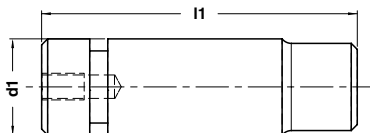
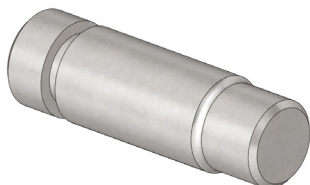


MERCEDES-BENZ CODE

B8 2002 0370694

MERCEDES-BENZ CODE	Max load (kg)	Max die weight (kg)	L1	D1
B8 2002 0370693	3200	6400	175	32
B8 2002 0370694	5000	10000	225	40
B8 2002 0537341	8000	16000	273	50
B8 2002 0537342	12500	25000	347	63
B8 2002 0537343	31500	63000	422	76

PAD RETAINER PIN - STECKBOLZEN - PERNO DI ARRESTO



Notes

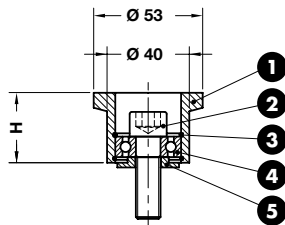
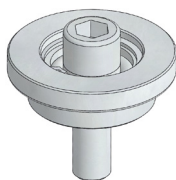
Material: CK45 - 800÷1000 N/mm²

STOCK

	MERCEDES-BENZ CODE		
	B8 2002 0333932		
MERCEDES-BENZ CODE	d1	l1	
B8 2002 0333400	32	122	
B8 2002 0332932	40	139	
B8 2002 0332933	50	167	

Standard Mercedes-Benz

COIL GUIDE ROLLER - FÜHRUNGSRÖLLE - GUIDA NASTRO



Notes

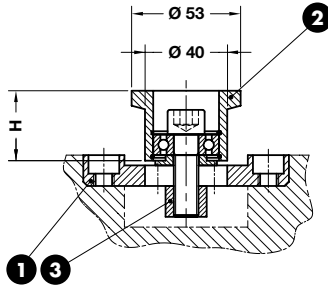
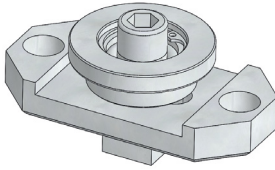
- 1** **Material:** 16MnCr5 - **HRC:** 55÷58
- 2** M12x40 DIN 472
- 3** I32 DIN 472
- 4** 6201 2Z VA DIN 625
- 5** **Material:** CK45

STOCK



	MERCEDES-BENZ CODE	
	B8 7007 0332935	
MERCEDES-BENZ CODE	H	
B8 7007 0332934	17	
B8 7007 0332935	34	
B8 7007 0530090	80	

COIL GUIDE ROLLER - FÜHRUNGSROLLE - GUIDA NASTRO



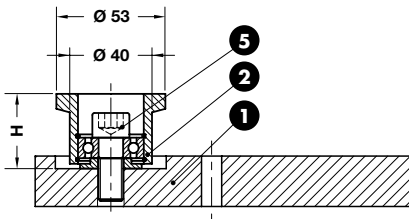
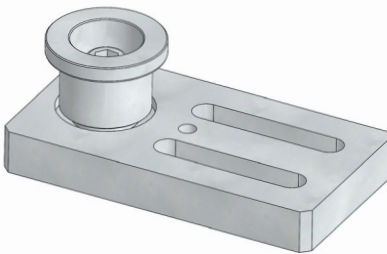
Notes

- 1 Material:** St37
- 2** B8 7007 0332934
B8 7007 0332935
B8 7007 0530090
- 3 Material:** CK45



	MERCEDES-BENZ CODE
	B8 7007 0332632
MERCEDES-BENZ CODE	H
B8 7007 0332631	17
B8 7007 0332632	34
B8 7007 0557701	80

COIL GUIDE ROLLER - FÜHRUNGSROLLE - GUIDA NASTRO



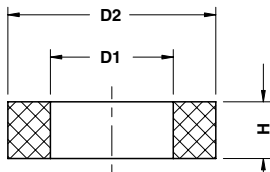
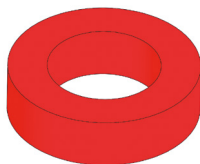
Notes

- 1 Material:** St37
- 2** B8 7007 0332935
B8 7007 0530090
- 5** M12x25 DIN 472



	MERCEDES-BENZ CODE
	B8 7007 0530089
MERCEDES-BENZ CODE	H
B8 7007 0530088	34
B8 7007 0530089	80

ELASTOMER WASHER - DAEMPfungSSCHEIBE - RONDELLA IN ELASTOMERO



Notes

Material: Elastomer 92 SH
 Only for replacement
 Nur für Reparatur
 Solo per riparazione

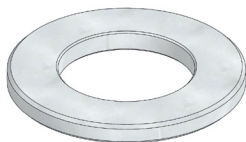
STOCK

ORDER EXAMPLE 	OMCR CODE
	A30.021.047

OMCR CODE	SIMILAR TO	D1	D2	H
A30.017.034	B8 0110 0332827	17	34	8
A30.021.047	B8 0110 0332828	21	47	8
A30.032.055	B8 0110 0332829	32,5	55	15
A30.038.063	B8 0110 0373385	38,5	63	15

Standard Mercedes-Benz

WASHER - SCHEIBE - RONDELLA



Notes

Material: CK45

STOCK

ORDER EXAMPLE 	OMCR CODE
	A31.039.068

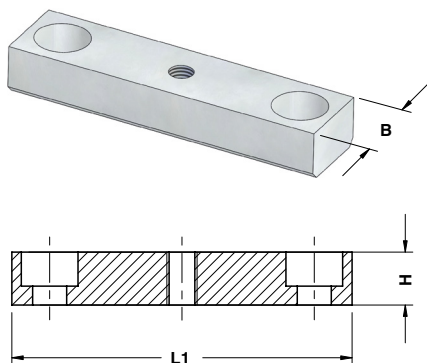
OMCR CODE	SIMILAR TO
A31.039.068	B8 0110 0373388

KEY - PASSFEDER - CHIAVETTA

Notes

Only for replacement
Nur für Reparatur
Solo per riparazione

STOCK



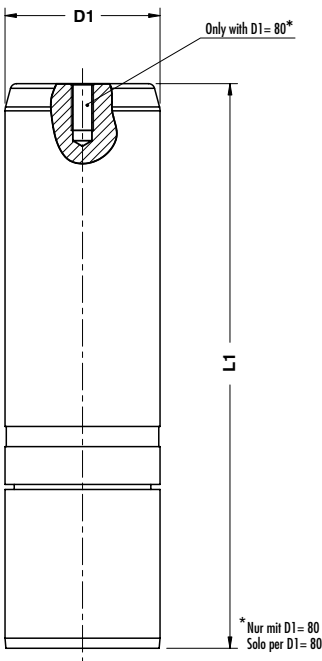
	OMCR CODE
	A32.022.050.A

OMCR CODE	SIMILAR TO	B	H	L1	Material
A32.022.050.A	B8 0111 0455258	22 0/+0,01	14	50	CK45
A32.022.090.A	B8 0111 0455442	22 0/+0,01	14	90	CK45
A32.022.150.A	B8 0111 0455443	22 0/+0,01	14	150	CK45
A32.022.240.A	B8 0111 0455444	22 0/+0,01	14	240	CK45
A32.022.050.B	B8 0111 1269321	22 +0,3/+0,4	14	50	CK45
A32.022.090.B	B8 0111 1269322	22 +0,3/+0,4	14	90	CK45
A32.022.150.B	B8 0111 1269323	22 +0,3/+0,4	14	150	CK45
A32.022.240.B	B8 0111 1269325	22 +0,3/+0,4	14	240	CK45
A32.030.150	B8 0111 1197100	30 h11	30	150	St37
A32.030.175	B8 0111 0370158	30 h11	30	175	St37
A32.030.240	B8 0111 1195191	30 h11	30	240	St37
A32.030.250	B8 0111 0333602	30 h11	30	250	St37
A32.022.150.C	B8 0111 0332735	22 h9	14	150	CK45
A32.022.240.C	B8 0111 0534548	22 h9	14	240	CK45

GUIDE POST - FÜHRUNGSSÄULE - COLONNA GUIDA

Notes

Material: 16MnCr5 - **HRC:** 60÷62



OMCR CODE
A33.040.160

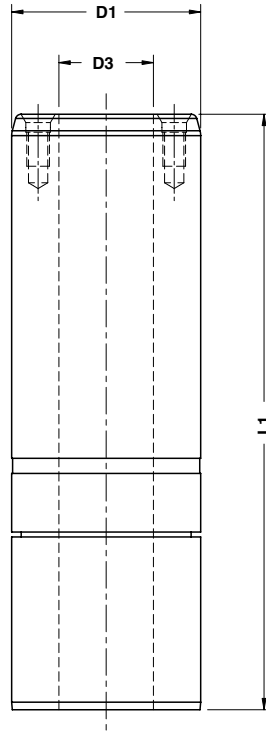
OMCR CODE	SIMILAR TO	D1	L1	OMCR CODE	SIMILAR TO	D1	L1
A33.040.160	B8 0450 0333405	40	160	A33.063.180	B8 0450 0333419	63	180
A33.040.180	B8 0450 0333406	40	180	A33.063.200	B8 0450 0333420	63	200
A33.040.200	B8 0450 0333407	40	200	A33.063.224	B8 0450 0333421	63	224
A33.040.224	B8 0450 0333408	40	224	A33.063.250	B8 0450 0333422	63	250
A33.040.183	B8 0450 0333409	40	250	A33.063.280	B8 0450 0333423	63	280
A33.040.184	B8 0450 0333410	40	280	A33.063.315	B8 0450 0333424	63	315
A33.050.160	B8 0450 0333411	50	160	A33.063.355	B8 0450 0333425	63	355
A33.050.180	B8 0450 0333412	50	180	A33.063.400	B8 0450 0333426	63	400
A33.050.200	B8 0450 0333413	50	200	A33.080.224	B8 0450 0333427	80	224
A33.050.224	B8 0450 0333414	50	224	A33.080.250	B8 0450 0333428	80	250
A33.050.250	B8 0450 0333415	50	250	A33.080.280	B8 0450 0333429	80	280
A33.050.280	B8 0450 0333416	50	280	A33.080.315	B8 0450 0333430	80	315
A33.050.315	B8 0450 0333417	50	315	A33.080.355	B8 0450 0333431	80	355
A33.050.355	B8 0450 0333418	50	355	A33.080.400	B8 0450 0333432	80	400

Standard Mercedes-Benz

GUIDE POST - FÜHRUNGSSÄULE - COLONNA GUIDA

Notes

Material: 16MnCr5 - **HRC:** 60÷62



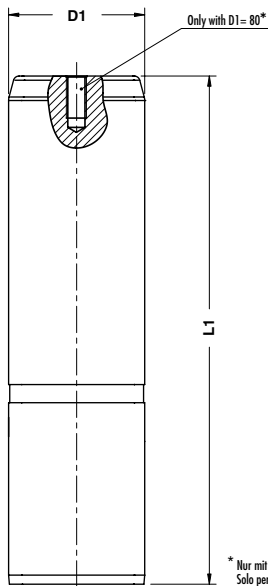
OMCR CODE
A34.100.280

OMCR CODE	SIMILAR TO	D1	D3	L1	OMCR CODE	SIMILAR TO	D1	D3	L1
A34.100.280	B8 0450 0333433	100	50	280	A34.125.450	B8 0450 0333439	125	65	450
A34.100.315	B8 0450 0333434	100	50	315	A34.160.400	B8 0450 0584356	160	95	400
A34.100.355	B8 0450 0333435	100	50	355	A34.160.450	B8 0450 0333440	160	95	450
A34.100.400	B8 0450 0333436	100	50	400	A34.160.500	B8 0450 0333441	160	95	500
A34.125.355	B8 0450 0333437	125	65	355	A34.160.560	B8 0450 0333442	160	95	560
A34.125.400	B8 0450 0333438	125	65	400					

GUIDE POST - FÜHRUNGSSÄULE - COLONNA GUIDA



Notes
Material: 16MnCr5 - **HRC:** 60÷62



OMCR CODE
A35.025.125

* Nur mit D1 = 80
 Solo per D1 = 80

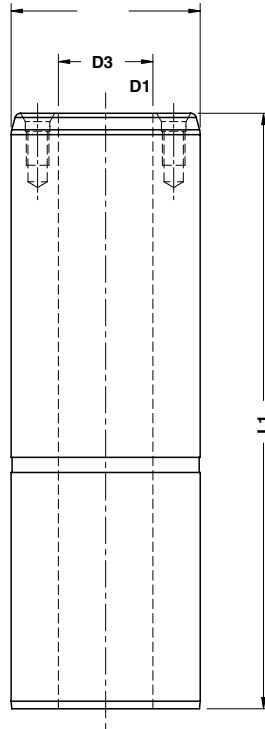
OMCR CODE	SIMILAR TO	D1	L1	OMCR CODE	SIMILAR TO	D1	L1
A35.025.125	B8 0450 0528716	25	125	A35.050.250	B8 0450 0332531	50	250
A35.025.140	B8 0450 0528717	25	140	A35.050.280	B8 0450 0332532	50	280
A35.025.160	B8 0450 0528718	25	160	A35.050.315	B8 0450 0332533	50	315
A35.025.128	B8 0450 0528719	25	180	A35.050.355	B8 0450 0332639	50	355
A35.032.140	B8 0450 0531827	32	140	A35.063.180	B8 0450 0332534	63	180
A35.032.160	B8 0450 0332519	32	160	A35.063.200	B8 0450 0332535	63	200
A35.032.180	B8 0450 0332520	32	180	A35.063.224	B8 0450 0332536	63	224
A35.032.200	B8 0450 0332521	32	200	A35.063.250	B8 0450 0332537	63	250
A35.040.140	B8 0450 0531828	40	140	A35.063.280	B8 0450 0332538	63	280
A35.040.160	B8 0450 0332522	40	160	A35.063.315	B8 0450 0332539	63	315
A35.040.180	B8 0450 0332523	40	180	A35.063.355	B8 0450 0332540	63	355
A35.040.200	B8 0450 0332524	40	200	A35.063.400	B8 0450 0332541	63	400
A35.040.224	B8 0450 0332525	40	224	A35.080.224	B8 0450 0332542	80	224
A35.040.250	B8 0450 0332526	40	250	A35.080.250	B8 0450 0332543	80	250
A35.040.280	B8 0450 0333401	40	280	A35.080.280	B8 0450 0332544	80	280
A35.050.160	B8 0450 0332527	50	160	A35.080.315	B8 0450 0332545	80	315
A35.050.180	B8 0450 0332528	50	180	A35.080.355	B8 0450 0332546	80	355
A35.050.200	B8 0450 0332529	50	200	A35.080.400	B8 0450 0332547	80	400
A35.050.224	B8 0450 0332530	50	224				

Standard
Mercedes-Benz

GUIDE POST - FÜHRUNGSSÄULE - COLONNA GUIDA

Notes

Material: 16MnCr5 - **HRC:** 60÷62



OMCR CODE
A36.100.280

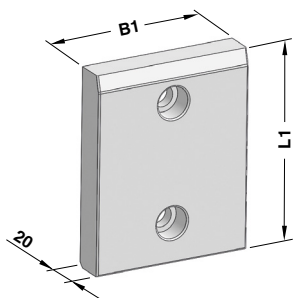
OMCR CODE	SIMILAR TO	D1	D3	L1	OMCR CODE	SIMILAR TO	D1	D3	L1
A36.100.280	B8 0450 0332548	100	50	280	A36.125.450	B8 0450 0332554	125	65	450
A36.100.315	B8 0450 0332549	100	50	315	A36.160.400	B8 0450 0584357	160	95	400
A36.100.355	B8 0450 0332550	100	50	355	A36.160.450	B8 0450 0332555	160	95	450
A36.100.400	B8 0450 0332551	100	50	400	A36.160.500	B8 0450 0332556	160	95	500
A36.125.355	B8 0450 0332552	125	65	355	A36.160.560	B8 0450 0332557	160	95	560
A36.125.400	B8 0450 0332553	125	65	400					

WEAR PLATE STEEL - GLEITPLATTE STAHL - PIASTRA GUIDA IN ACCIAIO

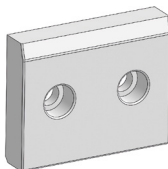
Notes

Material: X155CrVMo121KU

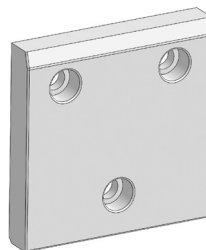
HRC: 60±62



FORM A



FORM B



FORM C

	ORDER EXAMPLE
	OMCR CODE
	A37.060.080 A

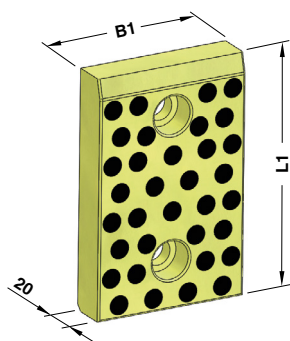
OMCR CODE	SIMILAR TO	B1	L1	FORM	OMCR CODE	SIMILAR TO	B1	L1	FORM
A37.060.080	B8 0460 0332860	60	80	A	A37.110.160	B8 0460 0332875	110	160	A
A37.060.100	B8 0460 0332861	60	100	A	A37.110.200	B8 0460 0332876	110	200	A
A37.060.125	B8 0460 0332862	60	125	A	A37.135.050	B8 0460 0332877	135	50	B
A37.060.160	B8 0460 0332863	60	160	A	A37.135.080	B8 0460 0332878	135	80	B
A37.060.200	B8 0460 0332864	60	200	A	A37.135.100	B8 0460 0332879	135	100	C
A37.090.050	B8 0460 0332865	90	50	B	A37.135.125	B8 0460 0332880	135	125	C
A37.090.080	B8 0460 0332866	90	80	A	A37.135.160	B8 0460 0332881	135	160	C
A37.090.100	B8 0460 0332867	90	100	A	A37.135.200	B8 0460 0332882	135	200	C
A37.090.125	B8 0460 0332868	90	125	A	A37.170.050	B8 0460 0332883	170	50	B
A37.090.160	B8 0460 0332869	90	160	A	A37.170.080	B8 0460 0332884	170	80	B
A37.090.200	B8 0460 0332870	90	200	A	A37.170.100	B8 0460 0332885	170	100	C
A37.110.050	B8 0460 0332871	110	50	B	A37.170.125	B8 0460 0332886	170	125	C
A37.110.080	B8 0460 0332872	110	80	B	A37.170.160	B8 0460 0332887	170	160	C
A37.110.100	B8 0460 0332873	110	100	A	A37.170.200	B8 0460 0332888	170	200	C
A37.110.125	B8 0460 0332874	110	125	A					

Standard Mercedes-Benz

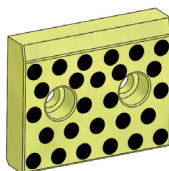
WEAR PLATE SELF-LUBRICATING VDI 3357
GLEITPLATTE BRONZE MIT FESTSCHMIERSTOFF VDI 3357
PIASTRA GUIDA AUTOLUBRIFICANTE VDI 3357

Notes

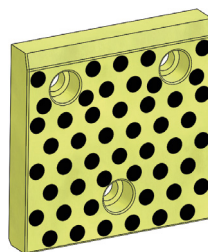
Material: Bronze + Graphite
HB > 190



FORM A



FORM B



FORM C

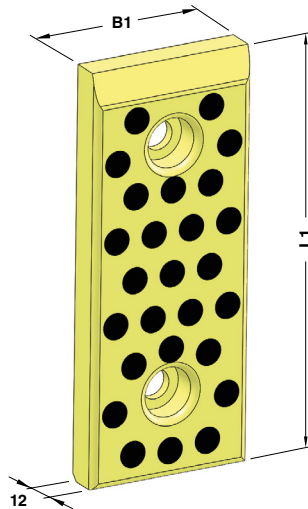
	OMCR CODE
	A38.050.080

OMCR CODE	SIMILAR TO	B1	L1	FORM	OMCR CODE	SIMILAR TO	B1	L1	FORM
A38.050.080	B8 0460 0332587	50	80	A	A38.100.160	B8 0460 0332602	100	160	A
A38.050.100	B8 0460 0332588	50	100	A	A38.100.200	B8 0460 0332603	100	200	A
A38.050.125	B8 0460 0332589	50	125	A	A38.125.050	B8 0460 0332604	125	50	B
A38.050.160	B8 0460 0332590	50	160	A	A38.125.080	B8 0460 0332605	125	80	B
A38.050.200	B8 0460 0332591	50	200	A	A38.125.100	B8 0460 0332606	125	100	C
A38.080.050	B8 0460 0332592	80	50	B	A38.125.125	B8 0460 0332607	125	125	C
A38.080.080	B8 0460 0332593	80	80	A	A38.125.160	B8 0460 0332608	125	160	C
A38.080.100	B8 0460 0332594	80	100	A	A38.125.200	B8 0460 0332609	125	200	C
A38.080.125	B8 0460 0332595	80	125	A	A38.160.050	B8 0460 0332610	160	50	B
A38.080.160	B8 0460 0332596	80	160	A	A38.160.080	B8 0460 0332611	160	80	B
A38.080.200	B8 0460 0332597	80	200	A	A38.160.100	B8 0460 0332612	160	100	C
A38.100.050	B8 0460 0332598	100	50	B	A38.160.125	B8 0460 0332613	160	125	C
A38.100.080	B8 0460 0332599	100	80	B	A38.160.160	B8 0460 0332614	160	160	C
A38.100.100	B8 0460 0332600	100	100	A	A38.160.200	B8 0460 0332615	160	200	C
A38.100.125	B8 0460 0332601	100	125	A					

**WEAR PLATE SELF-LUBRICATING VDI 3357
GLEITPLATTE BRONZE MIT FESTSCHMIERSTOFF VDI 3357
PIASTRA GUIDA AUTOLUBRIFICANTE VDI 3357**

Notes

Material: Bronze + Graphite
HB > 190

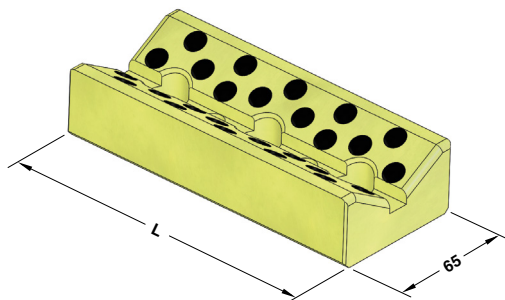


Standard
Mercedes-Benz

	OMCR CODE
	A39.030.080

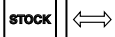
OMCR CODE	SIMILAR TO	B1	L1	OMCR CODE	SIMILAR TO	B1	L1
A39.030.080	B8 0460 0333603	30	80	A39.060.080	B8 0460 0333613	60	80
A39.030.100	B8 0460 0333604	30	100	A39.060.100	B8 0460 0333614	60	100
A39.030.125	B8 0460 0333605	30	125	A39.060.125	B8 0460 0333615	60	125
A39.030.160	B8 0460 0333606	30	160	A39.060.160	B8 0460 0333616	60	160
A39.030.200	B8 0460 0333607	30	200	A39.060.200	B8 0460 0333617	60	200
A39.040.080	B8 0460 0333608	40	80	A39.080.080	B8 0460 0789442	80	80
A39.040.100	B8 0460 0333609	40	100	A39.080.100	B8 0460 0789444	80	100
A39.040.125	B8 0460 0333610	40	125	A39.080.125	B8 0460 0789446	80	125
A39.040.160	B8 0460 0333611	40	160	A39.080.160	B8 0460 0789447	80	160
A39.040.200	B8 0460 0333612	40	200	A39.080.200	B8 0460 0789448	80	200

**"V" DRIVER SELF-LUBRICATING
PRISMENFÜHRUNG BRONZE MIT FESTSCHMIERSTOFF
GUIDA A "V" AUTOLUBRIFICANTE**



Notes

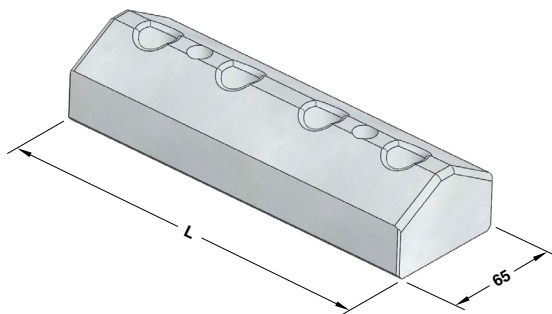
Material: Bronze + Graphite
HB > 190



OMCR CODE
A40.065.150

OMCR CODE	SIMILAR TO	L
A40.065.150	B8 0461 0330549	150
A40.065.200	B8 0461 0330550	200
A40.065.250	B8 0461 0330551	250
A40.065.300	B8 0461 0330552	300

"V" DRIVER STEEL - PRISMENFÜHRUNG STAHL - GUIDA A "V" IN ACCIAIO



Notes

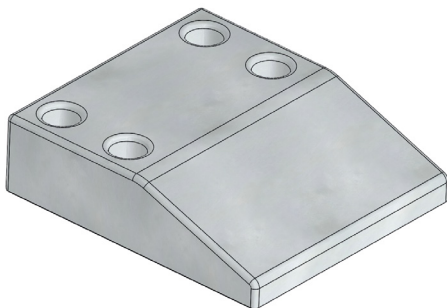
Material: CK45
HRC: 58÷60



OMCR CODE
A41.065.150

OMCR CODE	SIMILAR TO	L
A41.065.150	B8 0461 0330553	150
A41.065.200	B8 0461 0330554	200
A41.065.250	B8 0461 0330555	250
A41.065.300	B8 0461 0330556	300

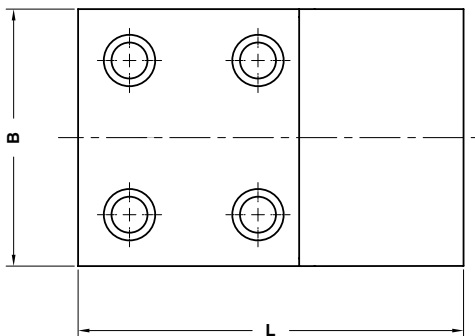
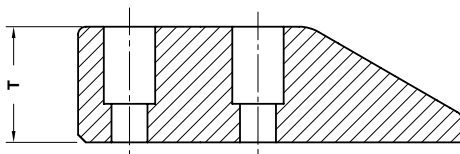
**CAM DWELL STEEL
UBERLAUFKEILE STAHL
CUNEO IN ACCIAIO**



Notes
Material: X15CrVMo121KU
HRC: 58÷62



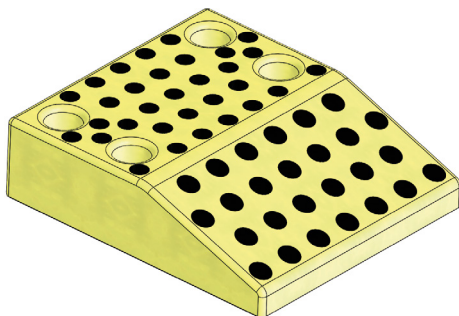
Standard
Mercedes-Benz



	OMCR CODE
	A42.100.150

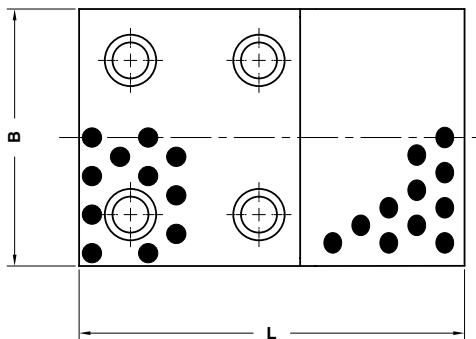
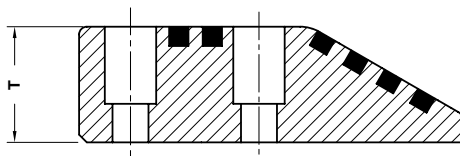
OMCR CODE	SIMILAR TO	B	L	T
A42.100.150	B8 0467 0528447	100	150	45
A42.100.170	B8 0467 0528448	100	170	60
A42.125.150	B8 0467 0528449	125	150	45
A42.125.170	B8 0467 0528450	125	170	60
A42.150.150	B8 0467 0528451	150	150	45
A42.150.170	B8 0467 0528452	150	170	60

**CAM DWELL WEAR PLATE SELF-LUBRICATING
 UBERLAUFKEILE BRONZE MIT FESTSCHMIERSTOFF
 CUNEO AUTOLUBRIFICANTE**



Notes
Material: Bronze + Graphite
HB > 190

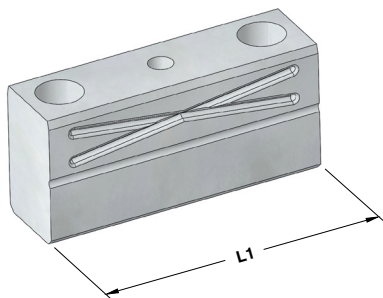
STOCK



	OMCR CODE
	B8 0467 0528753

OMCR CODE	SIMILAR TO	B	L	T
A43.100.150	B8 0467 0528752	100	150	45
A43.100.170	B8 0467 0528753	100	170	60
A43.125.150	B8 0467 0528754	125	150	45
A43.125.170	B8 0467 0528755	125	170	60
A43.150.150	B8 0467 0528756	150	150	45
A43.150.170	B8 0467 0528757	150	170	60

LOCATING BLOCK - FANGBACKE - TASSELLO DI CENTRAGGIO



Notes

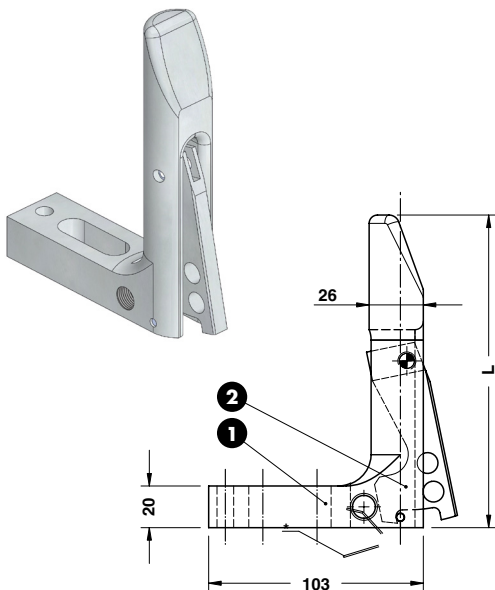
Material: 16MnCr5
HRC: 60±62

STOCK

	OMCR CODE		
	A44.075.100		
OMCR CODE	SIMILAR TO	L1	
A44.075.100	B8 0467 0091638	100	
A44.075.160	B8 0467 0091639	160	

Standard Mercedes-Benz

GAGE FOR SENSOR - EINWEISER FÜR TEILLAGEKONTROLLE - RIFERIMENTO PER SENSORE



Notes

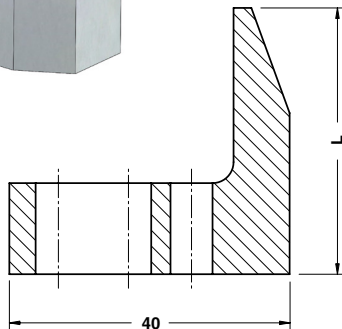
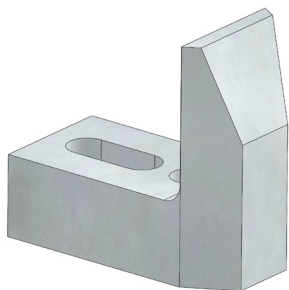
- 1 Material:** CK60
- 2 Material:** Si37 - **HRC:** 58±60

STOCK

*Spring - Feder - Molla

	OMCR CODE		
	A45.030.120		
OMCR CODE	SIMILAR TO	L	
A45.030.120	B8 0541 1049305	120	
A45.030.150	B8 0541 1049306	150	
A45.030.180	B8 0541 1049307	180	
A45.030.250	B8 0541 1049308	250	

GAGE - EINWEISER - RIFERIMENTO



Notes

Material: 21MnCr5 - HRC: 58÷60

STOCK

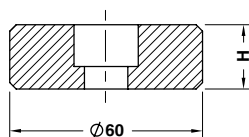
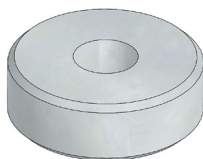


OMCR CODE

A46.020.028

OMCR CODE	SIMILAR TO	L
A46.020.028	B8 0541 1086747	28
A46.020.038	B8 0541 1086749	38
A46.020.048	B8 0541 1086750	48
A46.020.058	B8 0541 138392	58
A46.020.068	B8 0541 138393	68
A46.020.078	B8 0541 138395	78

SPACER - DISTANZSCHEIBE - DISTANZIALE



Notes

Material: CK45

STOCK

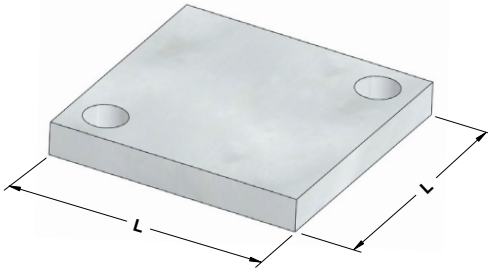


OMCR CODE

A47.020.060

OMCR CODE	SIMILAR TO	L
A47.020.060	B8 0550 0333522	20
A47.030.060	B8 0550 0333523	30
A47.040.060	B8 0550 0528689	40

BACKING PLATE - DRUCKPLATTE - REAZIONE PER CILINDRO



Notes

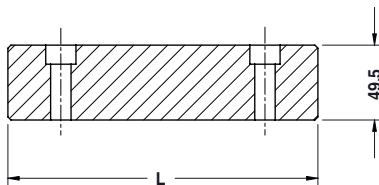
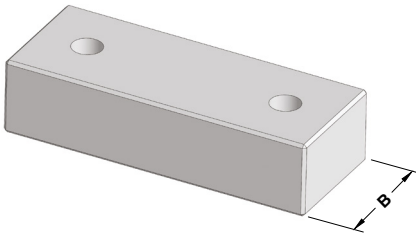
Material: 90MnCrV8
HRC: 49±52

STOCK

	OMCR CODE		
	A48.012.090		
OMCR CODE	SIMILAR TO	L	
A48.012.090	B8 0561 0347055	90	
A48.012.060	B8 0561 0544586	60	
A48.012.100	B8 0561 0343592	100	

Standard Mercedes-Benz

STOP BLOCK - ABSTANDSBLOCK - DISTANZIALE



Notes

Material: CK45

STOCK

	OMCR CODE			
	A49.080.155			
OMCR CODE	SIMILAR TO	B	L	
A49.080.155	B8 0561 0377769	80	155	
A49.080.205	B8 0561 0376641	80	205	
A49.100.245	B8 0561 0376642	100	245	

LOCATING PIN - ZENTRIERBOLZEN - CENTRAGGIO

Notes

Material: 16MnCr5
HRC: 60÷62

STOCK



OMCR CODE

A50.040.067

OMCR CODE

A50.040.067

SIMILAR TO

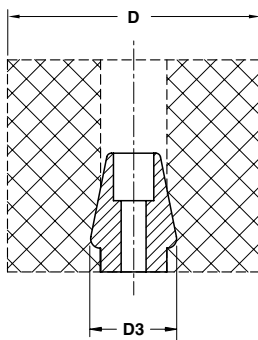
B8 0602 0533447

SPRING PIN - AUFNAHMEBOLZEN - PERNO PER MOLLA

Notes

Material: CK45

STOCK



OMCR CODE

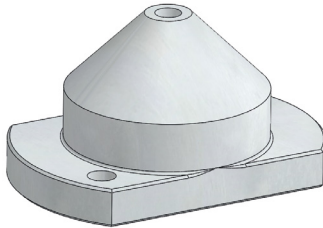
A51.028.050

OMCR CODE	SIMILAR TO	D	D3
A51.028.050	B8 0604 0333552	63	28
A51.032.050	B8 0604 0333553	80÷100	32
A51.038.050	B8 0604 0333554	125÷140	38

LOCATING CONE - ZENTRIERZAPFEN - CONO DI CENTRAGGIO



FORM A



FORM B

Notes

Material: 16MnCr5 - **HRC:** 60÷64

STOCK

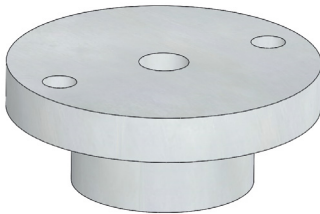


OMCR CODE	A52.058.100
------------------	-------------

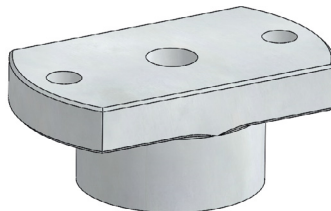
OMCR CODE	SIMILAR TO	FORM
A52.058.100	B8 0604 0372845	A
A52.058.100	B8 0604 0345936	B

Standard
Mercedes-Benz

LOCATING CONE - KEGELAUFSATZ - CONO DI CENTRAGGIO



FORM A



FORM B

Notes

Material: 16MnCr5 - **HRC:** 60÷64

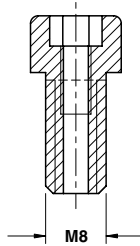
STOCK



OMCR CODE	A53.058.100
------------------	-------------

OMCR CODE	SIMILAR TO	FORM
A53.058.100	B8 0624 0372844	A
A53.058.100	B8 0624 0345931	B

SPACER - ABSTIMMSCHRAUBE - DISTANZIALE



Notes

DIN 912 8.8

STOCK



OMCR CODE

A54.01250.M8

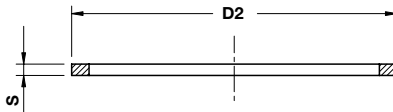
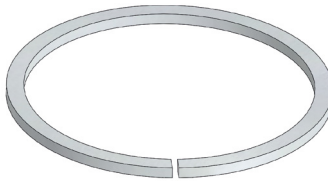
OMCR CODE

A54.01250.M8

SIMILAR TO

B8 1001 0333539

POST RING - SPRENGRING - ANELLO PER COLONNA

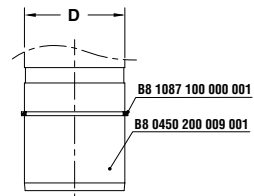


Notes

Material: EN 10270

STOCK

Application example

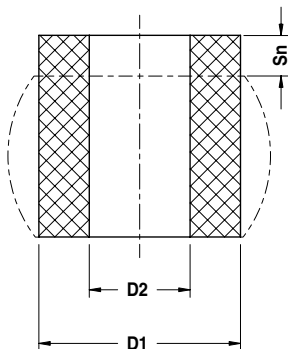
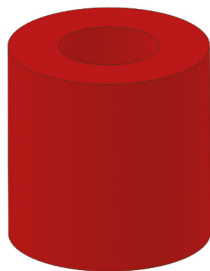


OMCR CODE

A55.040.04300

OMCR CODE	SIMILAR TO	D	D2	S	OMCR CODE	SIMILAR TO	D	D2	S	OMCR CODE	SIMILAR TO	D	D2	S
A55.040.04300	B8 1087 0333184	40	43	1,5	A55.080.08320	B8 1087 0333187	80	83,2	2	A55.040.04300	B8 1087 0333190	160	164,3	2,5
A55.050.05300	B8 1087 0333185	50	53	1,5	A55.100.01038	B8 1087 0333188	100	103,8	2,5					
A55.063.06600	B8 1087 0333186	63	66	1,5	A55.125.01288	B8 1087 0333189	125	128,8	2,5					

ELASTOMER SPRING - ELASTOMERFEDER - MOLLA IN ELASTOMERO



Sn max = 24 mm

Notes

Material: Elastomer 92 SH

Only for replacement
Nur für Reparatur
Solo per riparazione

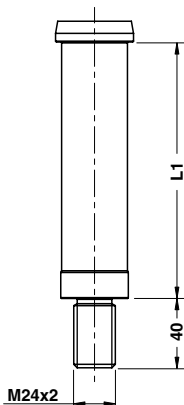
STOCK

	OMCR CODE
	A56.063.033

OMCR CODE	SIMILAR TO	D1	D2
A56.063.033	B8 1123 0332947	63	33
A56.080.033	B8 1123 0332948	80	33
A56.080.040	B8 1123 0377012	80	40
A56.090.040	B8 1123 0377013	90	40

Standard Mercedes-Benz

RETAINER BOLT - HALTEBOLZEN - TIRANTE



Notes

Material: 42CrMo4
1000÷1200 N/mm²

STOCK

	OMCR CODE
	A57.038.048

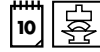
OMCR CODE	SIMILAR TO	L1	OMCR CODE	SIMILAR TO	L1	OMCR CODE	SIMILAR TO	L1
A57.038.048	B8 2002 0373389	48	A57.038.148	B8 2002 0373405	148	A57.038.248	B8 2002 0373412	248
A57.038.068	B8 2002 0373390	68	A57.038.168	B8 2002 0373406	168	A57.038.268	B8 2002 0373413	268
A57.038.088	B8 2002 0373391	88	A57.038.188	B8 2002 0373407	188	A57.038.288	B8 2002 0373414	288
A57.038.108	B8 2002 0373392	108	A57.038.208	B8 2002 0373409	208			
A57.038.128	B8 2002 0373393	128	A57.038.228	B8 2002 0373410	228			

AIR PIN - DRUCKBOLZEN - CANDELA



Notes

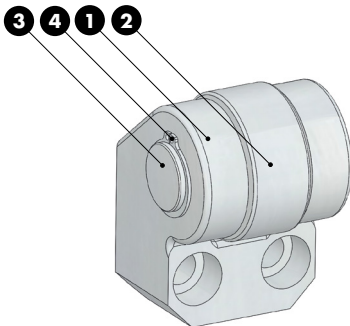
Material: 42CrMo4
800±1000 N/mm²



ORDER EXAMPLE	OMCR CODE
	A58.036.150

OMCR CODE	SIMILAR TO	L
A58.036.150	B8 2002 1152051	150
A58.036.175	B8 2002 1152052	175
A58.036.200	B8 2002 1152053	200
A58.036.225	B8 2002 1152054	225
A58.036.250	B8 2002 1152055	250
A58.036.275	B8 2002 1410472	275
A58.036.300	B8 2002 1410473	300
A58.036.325	B8 2002 1410474	325
A58.036.350	B8 2002 1410475	350

CAM ROLLER - ROLLENBOCK - SUPPORTO CON RULLO



Notes

- 1 **Material:** 42CrMo4
- 2 NUTR 2552
- 3 **Material:** X210Cr12 - HRC 60±62
- 4 E25 DIN 471



ORDER EXAMPLE	OMCR CODE
	A59.025.052

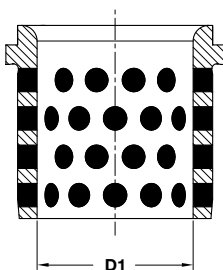
OMCR CODE	SIMILAR TO
A59.025.052	B8 7466 033319

E46.10

NOT HOMOLOGATED IN MERCEDES-BENZ



BUSH SELF-LUBRICATING DIN 9834 FÜHRUNGSBUCHSE DIN 9834 BOCCOLA AUTOLUBRIFICANTE DIN 9834



Notes

Material: Bronze + Graphite**HB** > 190

STOCK



OMCR CODE

E46.10.025040

OMCR CODE	SIMILAR TO	D1
E46.10.025040	B8 0441 0331931	25
E46.10.032050	B8 0441 0331932	32
E46.10.040063	B8 0441 0331933	40
E46.10.050071	B8 0441 0331934	50
E46.10.063080	B8 0441 0331935	63
E46.10.080100	B8 0441 0331936	80
E46.10.100125	B8 0441 0331937	100
E46.10.125160	B8 0441 0331938	125
E46.10.160200	B8 0441 0331939	160

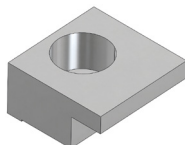
Standard
Mercedes-Benz

E47.10

NOT HOMOLOGATED IN MERCEDES-BENZ



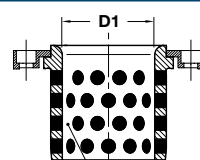
TOE CLAMP - HALTESTÜCK - RITEGNO PER BOCCOLA



Notes

Material: CK45

Application example



B8 0441 0331931-0331939

STOCK



OMCR CODE

E47.10.202010

OMCR CODE	SIMILAR TO	D1
E47.10.202010	B8 0161 03311940	25-50
E47.10.323216	B8 0161 03311941	63-160

